



Andreas Junghans



Refrigerated display cabinets

Display cabinet

Decerpo 120

with own cooling unit or
central cooling connection



certificated by:
ISO 9001:2008
§ 19 I WHG

Product details

Outside dimensions: 1200 x 747 x 1621 mm (WxDxH)

Refrigerated display cabinet for connection to a central refrigeration system or with its own refrigeration unit (upon request, according to the ambient conditions and application requirements) with temperature-recording

Configuration:

Composite plant Slope convection case, the inner and outer body made of material no 1.4301, doors on the operator side are sliding-doors made of insulated glass, side open to customers, side windows (RL) to the right and left are made of toughened glass, defrost water outlet DN40;

Case controller XR120C-5POC1 with RS 485 interface temperature record, fully automatic defrosting, case controller on operator side ESG-glass display area, all display cases for a connection to a central cooling plant are equipped with expansion and solenoid valve.

Lightning: LED High output with length 895mm 14,8W nw

Electric power demand max. 500W with electrical connection 230V/50Hz, AC

Refrigerant R404a; $Q_o = 1668W$ at $t_o = -10\text{ }^\circ\text{C}$

Temperature range: $+4\text{ }^\circ\text{C}$ to $+6\text{ }^\circ\text{C}$

Environmental conditions $t_a = 25\text{ }^\circ\text{C}$, 60% relative humidity

Liquid line tube $d_a = 10\text{mm}$

Suction line tube $d_a = 12\text{mm}$

Connection with customer-supplied condensate trap must required!

All the models described above can also independently with its own refrigeration unit and appropriate refrigeration controller can be equipped.

Variations:

SV - food showcase: 2 shelves made of safety glass, height adjustable, above 0,42 m² middle 0.51 m²

GV - drinks cabinet: 2 shelves with plastic covers and drinks tray

SGV - food and beverage showcase: 2 shelves made of safety glass and drinks tray

Models SV-GV- SGV with night cover (higher energy savings) index J

SGV-SV models with wall flaps (improved energy efficiency) index K



Andreas Junghans

Chemnitzer Straße 63
09669 Frankenberg/Sa.
Germany

Tel.: +49 (0) 37206 / 862 - 0

Fax: +49 (0) 37206 / 862 - 23

Internet: www.ajunghans.de

E-Mail: info@ajunghans.de





Andreas Junghans



Refrigerated display cabinets

Display cabinet

Decerpo 140

with own cooling unit or
central cooling connection



certificated by:
ISO 9001:2008
§ 19 I WHG

Product details

Outside dimensions: 1400 x 747 x 1621 mm (WxDxH)

Refrigerated display cabinet for connection to a central refrigeration system or with its own refrigeration unit (upon request, according to the ambient conditions and application requirements) with temperature-recording

Configuration:

Composite plant Slope convection case, the inner and outer body made of material no 1.4301, doors on the operator side are sliding-doors made of insulated glass, side open to customers, side windows (RL) to the right and left are made of toughened glass, defrost water outlet DN40;

Case controller XR120C-5POC1 with RS 485 interface temperature record, fully automatic defrosting, case controller on operator side ESG-glass display area, all display cases for a connection to a central cooling plant are equipped with expansion and solenoid valve.

Lightning: LED High output with length 1195mm 14,8W nw

Electric power demand max. 500W with electrical connection 230V/50Hz, AC

Refrigerant R404a; $Q_o = 1668W$ at $t_o = -10^\circ C$

Temperature range: $+4^\circ C$ to $+6^\circ C$

Environmental conditions $t_a = 25^\circ C$, 60% relative humidity

Liquid line tube $d_a = 10mm$

Suction line tube $d_a = 12mm$

Connection with customer-supplied condensate trap must required!

All the models described above can also independently with its own refrigeration unit and appropriate refrigeration controller can be equipped.

Variations:

SV - food showcase: 2 shelves made of safety glass, height adjustable, above 0,47 m² middle 0.58 m²

GV - drinks cabinet: 2 shelves with plastic covers and drinks tray

SGV - food and beverage showcase: 2 shelves made of safety glass and drinks tray

Models SV-GV- SGV with night cover (higher energy savings) index J

SGV-SV models with wall flaps (improved energy efficiency) index K

 **Andreas Junghans**

Chemnitzer Straße 63
09669 Frankenberg/Sa.
Germany

Tel.: +49 (0) 37206 / 862 - 0

Fax: +49 (0) 37206 / 862 - 23

Internet: www.ajunghans.de

E-Mail: info@ajunghans.de





Andreas Junghans



Refrigerated display cabinets

Display cabinet

Decerpo 160

with own cooling unit or
central cooling connection



certificated by:
ISO 9001:2008
§ 191 WHG

Product details

Outside dimensions: 1600 x 747 x 1621 mm (WxDxH)

Refrigerated display cabinet for connection to a central refrigeration system or with its own refrigeration unit (upon request, according to the ambient conditions and application requirements) with temperature-recording

Configuration:

Composite plant Slope convection case, the inner and outer body made of material no 1.4301, doors on the operator side are sliding-doors made of insulated glass, side open to customers, side windows (RL) to the right and left are made of toughened glass, defrost water outlet DN40;

Case controller XR120C-5POC1 with RS 485 interface temperature record, fully automatic defrosting, case controller on operator side ESG-glass display area, all display cases for a connection to a central cooling plant are equipped with expansion and solenoid valve.

Lightning: LED High output with length 1195mm 14,8W nw

Electric power demand max. 500W with electrical connection 230V/50Hz, AC

Refrigerant R404a; $Q_o = 1668W$ at $t_o = -10\text{ }^\circ\text{C}$

Temperature range: $+4\text{ }^\circ\text{C}$ to $+6\text{ }^\circ\text{C}$

Environmental conditions $t_a = 25\text{ }^\circ\text{C}$, 60% relative humidity

Liquid line tube $d_a = 10\text{mm}$

Suction line tube $d_a = 12\text{mm}$

Connection with customer-supplied condensate trap must required!

All the models described above can also independently with its own refrigeration unit and appropriate refrigeration controller can be equipped.

Variations:

SV - food showcase: 2 shelves made of safety glass, height adjustable, above 0,55 m² middle 0.68 m²

GV - drinks cabinet: 2 shelves with plastic covers and drinks tray

SGV - food and beverage showcase: 2 shelves made of safety glass and drinks tray

Models SV-GV- SGV with night cover (higher energy savings) index J

SGV-SV models with wall flaps (improved energy efficiency) index K



Andreas Junghans

Chemnitzer Straße 63
09669 Frankenberg/Sa.
Germany

Tel.: +49 (0) 37206 / 862 - 0

Fax: +49 (0) 37206 / 862 - 23

Internet: www.ajunghans.de

E-Mail: info@ajunghans.de





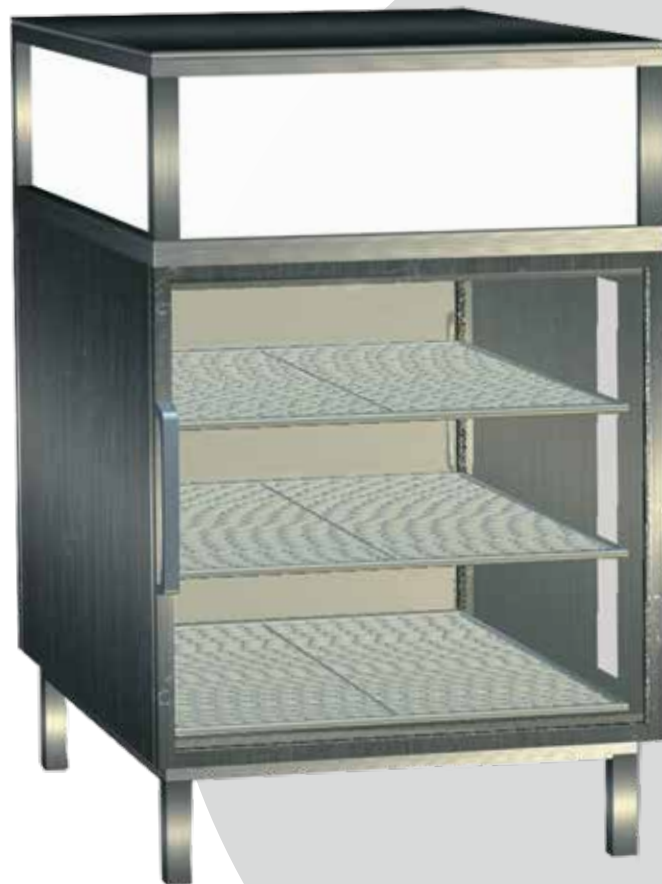
Andreas Junghans



Refrigerated display cabinets

Display cabinet

Refrigero 5



certificated by:
ISO 9001:2008
§ 191 WHG

Product details:

The frame and the side parts are made of stainless steel, the two doors of glass (single-pane safety glass) with a frame of stainless steel. In the refrigerated display cabinet is installed a interior lightning and an ad space lightning. With a digital thermostat is controlled the temparture in a fixed range and an automatic defrosting.

Specifications

Outside dimensions LxWxH in mm	610x970x1010
Set-up	
Operation LxWxH in mm	610x2140x1010
Capacity (gross; net in l)	(274l;254l)
Weight in kg	119
Temperature class (DIN EN ISO 23953)	4 (30°C; rel.LF 55%)
Energy consumption (DIN EN ISO 23953) in kWh	6,2
Adjustable temperature range	+2°C.....+15°C
Temperature range	3,0°C-5,0°C
Set value	3,0°C
Electrical connexion	230V/50-60Hz; AC
Max. power requirements	430W
Preliminary fuse (on site)	16A; time-lag fuse
Ad space lighting	LSTR; 3x13W
Interior lighting	LSTR; 2x13W
Refrigerant	R134a;350g
Cooling capacity(to=-10°C) in W	260
Operating pressure (bar)	16
Number of removable racks	5
Max. bearing load (two-dimensional) per rack, incl. stand and holding fixtures in kg	15



Andreas Junghans

Chemnitzer Straße 63
09669 Frankenberg/Sa.
Germany

Tel.: +49 (0) 37206 / 862 - 0
Fax: +49 (0) 37206 / 862 - 23

Internet: www.ajunghans.de
E-Mail: info@ajunghans.de





Andreas Junghans



Refrigerated display cabinets

Display cabinet

Refrigero 6



certificated by:
ISO 9001:2008
§ 191 WHG

Product details:

The frame and the side parts are made of stainless steel, the two doors of glass (single-pane safety glass) with a frame of stainless steel. In the refrigerated display cabinet is installed a interior lightning and an ad space lightning. With a digital thermostat is controlled the temparture in a fixed range and an automatic defrosting.

Specifications

Outside dimensions LxWxH in mm	462x815x1010
Set-up	
Operation LxWxH in mm	610x1645x1010
Capacity (gross; net in l)	153l;134l
Weight in kg	97
Temperature class (DIN EN ISO 23953)	4 (30°C; rel.LF 55%)
Energy consumption (DIN EN ISO 23953) in kWh	6,0
Adjustable temperature range	+2°C.....+15°C
Temperature range	3,5°C-5,5°C
Set value	3,5°C
Electrical connexion	230V/50-60Hz; AC
Max. power requirements	430W
Preliminary fuse (on site)	16A; time-lag fuse
Ad space lighting	LSTR; 2x13W, 1x8W
Interior lighting	LSTR; 2x13W
Refrigerant	R134a;350g
Cooling capacity(to=-10°C) in W	260
Operating pressure (bar)	16
Number of removable racks	5
Max. bearing load (two-dimensional) per rack, incl. stand and holding fixtures in kg	15



Andreas Junghans

Chemnitzer Straße 63
09669 Frankenberg/Sa.
Germany

Tel.: +49 (0) 37206 / 862 - 0
Fax: +49 (0) 37206 / 862 - 23

Internet: www.ajunghans.de
E-Mail: info@ajunghans.de





Andreas Junghans



Refrigerated display cabinets

Display cabinet

Refrigero 6 C₃

Power saving up to 20%



*environment friendly
cooling agent GWP 3*



certificated by:
ISO 9001:2008
§ 191 WHG

Product details:

The frame and the side parts are made of stainless steel, the two doors of glass (single-pane safety glass) with a frame of stainless steel. In the refrigerated display cabinet is installed a interior lightning and an ad space lightning. With a digital thermostat is controlled the temparture in a fixed range and an automatic defrosting.

Specifications

Outside dimensions LxWxH in mm	462x815x1010
Set-up	
Operation LxWxH in mm	610x1645x1010
Capacity (gross; net in l)	153l;134l
Weight in kg	97
Temperature class (DIN EN ISO 23953)	4 (30°C; rel.LF 55%)
Energy consumption (DIN EN ISO 23953) in kWh	6,0
Adjustable temperature range	+2°C.....+15°C
Temperature range	3,5°C-5,5°C
Set value	3,5°C
Electrical connexion	230V/50-60Hz; AC
Max. power requirements	350W
Preliminary fuse (on site)	16A; time-lag fuse
Ad space lighting	LED
Interior lighting	LED
Refrigerant	R134a;140g
Cooling capacity(to=-10°C) in W	260
Operating pressure (bar)	16
Number of removable racks	5
Max. bearing load (two-dimensional) per rack, incl. stand and holding fixtures in kg	15



Andreas Junghans

Chemnitzer Straße 63
09669 Frankenberg/Sa.
Germany

Tel.: +49 (0) 37206 / 862 - 0
Fax: +49 (0) 37206 / 862 - 23

Internet: www.ajunghans.de
E-Mail: info@ajunghans.de

Power saving up to 20%





Andreas Junghans



Refrigerated display cabinets

Display cabinet

Refrigero 40



certificated by:
ISO 9001:2008
§ 191 WHG

Product details:

The frame and the side parts are made of stainless steel, the door of glass (single-pane safety glass) with a frame of stainless steel. In the refrigerated display cabinet is installed a interior lightning and an ad space lightning. With a digital thermostat is controlled the temparture in a fixed range and an automatic defrosting.

Specifications

Outside dimensions LxWxH in mm	620x705x950
Set-up Operation LxWxH in mm	620x1250x950
Capacity (gross; net in l)	163l;152l
Weight in kg	105
Temperature class (DIN EN ISO 23953)	5 (40°C; rel.LF 40%)
Energy consumption (DIN EN ISO 23953) in kWh	10,77
Adjustable temperature range	+2°C.....+15°C
Temperature range	2,0°C-2,5°C
Set value	2,0°C
Electrical connexion	230V/50-60Hz; AC
Max. power requirements	520W
Preliminary fuse (on site)	16A; time-lag fuse
Ad space lighting	LSTR; 1x13W
Interior lighting	LSTR; 2x13W
Refrigerant	R400A;450g
Cooling capacity(to=-10°C) in W	490
Operating pressure (bar)	28
Number of removable racks	3
Max. bearing load (two-dimensional) per rack, incl. stand and holding fixtures in kg	30



Andreas Junghans

Chemnitzer Straße 63
09669 Frankenberg/Sa.
Germany

Tel.: +49 (0) 37206 / 862 - 0
Fax: +49 (0) 37206 / 862 - 23

Internet: www.ajunghans.de
E-Mail: info@ajunghans.de





Andreas Junghans



Refrigerated display cabinets

Display cabinet

Refrigero 7



certificated by:
ISO 9001:2008
§ 191 WHG

Product details:

The frame and the side parts are made of stainless steel, the two sliding doors of glass (single-pane safety glass) with a frame of stainless steel. In the refrigerated display cabinet is installed a interior lightning and an ad space lightning. With a digital thermostat is controlled the temparture in a fixed range and an automatic defrosting.

Specifications

Outside dimensions LxWxH in mm	920x620x700
Set-up	
Capacity (gross; net in l)	154l
Weight in kg	90
Temperature class (DIN EN ISO 23953)	3 (25°C; rel.LF 60%)
Energy consumption (DIN EN ISO 23953) in kWh	5,2
Adjustable temperature range	+2°C.....+15°C
Temperature range	3,5°C-5,5°C
Set value	3,5°C
Electrical connexion	230V/50-60Hz; AC
Max. power requirements	430W
Preliminary fuse (on site)	16A; time-lag fuse
Ad space lighting	2x8W
Refrigerant	R134a;350g
Cooling capacity(to=-10°C) in W	260
Operating pressure (bar)	16
Number of removable racks	2 adjustable angle
Max. bearing load (two-dimensional) per rack, incl. stand and holding fixtures in kg	15



Andreas Junghans

Chemnitzer Straße 63
09669 Frankenberg/Sa.
Germany

Tel.: +49 (0) 37206 / 862 - 0
Fax: +49 (0) 37206 / 862 - 23

Internet: www.ajunghans.de
E-Mail: info@ajunghans.de





Andreas Junghans



Refrigerated display cabinets

Display cabinet

Refrigero 8



certificated by:
ISO 9001:2008
§ 191 WHG

Product details:

The frame and the side parts are made of stainless steel, the door of glass (single-pane safety glass) with a frame of stainless steel. In the refrigerated display cabinet is installed a interior lightning and an ad space lightning. With a digital thermostat is controlled the temparture in a fixed range and an automatic defrosting.

Specifications

Outside dimensions LxWxH in mm	452x788x1010
Set-up	
Operation LxWxH in mm	610x1200x1010
Capacity (gross; net in l)	152l;134l
Weight in kg	88
Temperature class (DIN EN ISO 23953)	4 (30°C; rel.LF 55%)
Energy consumption (DIN EN ISO 23953) in kWh	4,4
Adjustable temperature range	+2°C.....+15°C
Temperature range	3,5°C-5,5°C
Set value	3,5°C
Electrical connexion	230V/50-60Hz; AC
Max. power requirements	430W
Preliminary fuse (on site)	16A; time-lag fuse
Ad space lighting	LSTR; 2x13W, 1x8W
Interior lighting	LSTR; 2x13W
Refrigerant	R134α;350g
Cooling capacity(to=-10°C) in W	260
Operating pressure (bar)	16
Number of removable racks	5
Max. bearing load (two-dimensional) per rack, incl. stand and holding fixtures in kg	15



Andreas Junghans

Chemnitzer Straße 63
09669 Frankenberg/Sa.
Germany

Tel.: +49 (0) 37206 / 862 - 0
Fax: +49 (0) 37206 / 862 - 23

Internet: www.ajunghans.de
E-Mail: info@ajunghans.de





Andreas Junghans



Refrigerated display cabinets

Display cabinet

Refrigero 9



certificated by:
ISO 9001:2008
§ 191 WHG

Product details:

The frame is made of stainless steel, the door and the side walls of glass (single-pane safety glass) with a frame of stainless steel. In the refrigerated display cabinet is installed a interior lightning and an ad space lightning. With a digital thermostat is controlled the temparture in a fixed range and an automatic defrosting.

Specifications

Outside dimensions LxWxH in mm	600x600x1010
Set-up	
Operation LxWxH in mm	600x1445x1010
Capacity (gross; net in l)	163;152
Weight in kg	97
Temperature class (DIN EN ISO 23953)	5 (40°C; rel.LF 40%)
Adjustable temperature range	+2°C.....+15°C
Temperature range	3,5°C-5,5°C
Set value	5,0°C
Electrical connexion	230V/50Hz; AC
Max. power requirements	520W
Preliminary fuse (on site)	16A; time-lag fuse
Ad space lighting	LED
Interior lighting	LED
Refrigerant	R1404A;450g
Cooling capacity(to=-10°C) in W	300
Operating pressure (bar)	20
Number of removable racks	5
Max. bearing load (two-dimensional) per rack, incl. stand and holding fixtures in kg	15



Andreas Junghans

Chemnitzer Straße 63
09669 Frankenberg/Sa.
Germany

Tel.: +49 (0) 37206 / 862 - 0
Fax: +49 (0) 37206 / 862 - 23

Internet: www.ajunghans.de
E-Mail: info@ajunghans.de





Andreas Junghans



Refrigerated display cabinets

Display cabinet

Propino 45



certificated by:
ISO 9001:2008
§ 191 WHG

Product details:

The frame and the side parts are made of stainless steel, the door of glass (single-pane safety glass) with a frame of stainless steel. In the refrigerated display cabinet is installed a interior lightning and an ad space lightning. With a digital thermostat is controlled the temparture in a fixed range and an automatic defrosting.

Specifications

Outside dimensions LxWxH in mm	450x600x850
Set-up	
Operation LxWxH in mm	610x1645x850
Capacity (gross; net in l)	55l;48l
Weight in kg	65
Temperature class (DIN EN ISO 23953)	3 (25°C; rel.LF 60%)*
Energy consumption (DIN EN ISO 23953) in kWh	2,0*
Adjustable temperature range	+2°C..... +15°C
Temperature range	3,5°C-5,5°C
Set value	3,5°C
Electrical connexion	230V/50-60Hz; AC
Max. power requirements	350W
Preliminary fuse (on site)	16A, time-lag fuse
Interior lighting	LSTR; 2x13W
Refrigerant	R134a;210g
Cooling capacity(to=-10°C) in W	137
Operating pressure (bar)	16
Number of removable racks	3
Max. bearing load (two-dimensional) per rack, incl. stand and holding fixtures in kg	15



Andreas Junghans

Chemnitzer Straße 63
09669 Frankenberg/Sa.
Germany

Tel.: +49 (0) 37206 / 862 - 0
Fax: +49 (0) 37206 / 862 - 23

Internet: www.ajunghans.de
E-Mail: info@ajunghans.de





Andreas Junghans



Refrigerated display cabinets

Display cabinet

Propino 60



certificated by:
ISO 9001:2008
§ 191 WHG

Product details:

The frame and the side parts are made of stainless steel, the door of glass (single-pane safety glass) with a frame of stainless steel. In the refrigerated display cabinet is installed a interior lightning and an ad space lightning. With a digital thermostat is controlled the temparture in a fixed range and an automatic defrosting.

Specifications

Outside dimensions LxWxH in mm	600x600x850
Set-up	
Operation LxWxH in mm	800x1200x850
Capacity (gross; net in l)	154l
Weight in kg	80
Temperature class (DIN EN ISO 23953)	3 (25°C; rel.LF 60%)*
Energy consumption (DIN EN ISO 23953) in kWh	3,2*
Adjustable temperature range	+2°C.....+15°C
Temperature range	3,5°C-5,5°C
Set value	3,5°C
Electrical connexion	230V/50-60Hz; AC
Max. power requirements	400W
Preliminary fuse (on site)	16A; time-lag fuse
Interior lighting	LSTR 2x8W
Refrigerant	R134a; 165g
Cooling capacity(to=-10°C) in W	260
Operating pressure (bar)	16
Number of removable racks	3
Max. bearing load (two-dimensional) per rack, incl. stand and holding fixtures in kg	15



Andreas Junghans

Chemnitzer Straße 63
09669 Frankenberg/Sa.
Germany

Tel.: +49 (0) 37206 / 862 - 0
Fax: +49 (0) 37206 / 862 - 23

Internet: www.ajunghans.de
E-Mail: info@ajunghans.de





Andreas Junghans



Refrigerated display cabinets

Display cabinet

Esito 45



certificated by:
ISO 9001:2008
§ 191 WHG

Product details:

The frame and the side parts are made of stainless steel, the door of glass (single-pane safety glass) with a frame of stainless steel. In the refrigerated display cabinet is installed a interior lightning and an ad space lightning. With a digital thermostat is controlled the temparture in a fixed range and an automatic defrosting.

Specifications

Outside dimensions LxWxH in mm	600x600x450
Set-up	
Operation LxWxH in mm	600x1175x450
Capacity (gross; net in l)	50l;38l
Weight in kg	60
Temperature class (DIN EN ISO 23953)	3 (25°C; rel.LF 60%)*
Energy consumption (DIN EN ISO 23953) in kWh	1,5*
Adjustable temperature range	+2°C.....+12°C
Temperature range	3,0°C-5,0°C
Set value	3,5°C
Electrical connexion	230V/50-60Hz; AC
Max. power requirements	300W
Preliminary fuse (on site)	16A; time-lag fuse
Refrigerant	R134a;110g
Cooling capacity(to=-10°C) in W	137
Operating pressure (bar)	16



Andreas Junghans

Chemnitzer Straße 63
09669 Frankenberg/Sa.
Germany

Tel.: +49 (0) 37206 / 862 - 0
Fax: +49 (0) 37206 / 862 - 23

Internet: www.ajunghans.de
E-Mail: info@ajunghans.de





Andreas Junghans



Refrigerated display cabinets

Display cabinet

Impendere 138



certificated by:
ISO 9001:2008
§ 19 I WHG

Refrigerated display cabinet with two different cooling zones for temporary storage of finished bakery products and pasta.

Specifications

Dimensions:	1380 x 1558 x 800 mm (W x H x D)
Volume:	800 mm wide, 320l (area A) 500 mm wide, 200l (area B)
Weight (net):	520 kg
Temperature inside:	2 ... 12°C (independently adjustable for both sides)
Refrigant:	R 404A (protected by pressure switch)
Cooling capacity: (at $V_t-10^{\circ}\text{C}$)	803 W (area A) 532 W (area B)

Environmental conditions:

Ambient temperature:	10 ... 25°C
Relative Humidity:	max. 60 % (no condensate on surface)
temperature range inside:	+5,5.....+12°C (area A) +16.....+20°C (area B)

Connections

Waste water:	DN 40 mm (OKF) sewer connection with trap (on site)
Elektrical:	230 V AC, 16 A (on site); 24 V DC supply voltage internally
Power consumption:	902 W (area A) 619 W (area B)
Lightning:	3 x 13 W (area A) 3 x 8 W (area B)
Protection class:	IP20
Display floors: maximum payload	3 pieces per cooling zone illuminated 20kg

with adjustable feet.



Andreas Junghans

Chemnitzer Straße 63
09669 Frankenberg/Sa.
Germany

Tel.: +49 (0) 37206 / 862 - 0
Fax: +49 (0) 37206 / 862 - 23

Internet: www.ajunghans.de
E-Mail: info@ajunghans.de

